

## Bronze Arts Award- Gallery Reflection- The Hepworth Wakefield *by Leon McIvor*



We took the train to Wakefield Kirkgate station. Then we crossed to Hepworth Art Gallery

The bridge you enter in from has shiny metal sides and a thin grid of metalwork as the floor. When you leave this bridge you see the beautiful and domineering Hepworth art gallery, which is a vast building of shining and glimmering metal. There aren't many windows but the ones you see are vast and clear.

The gallery I spent the most time in was gallery one, because it was landscapes. At the Hepworth they have a great collection. One of

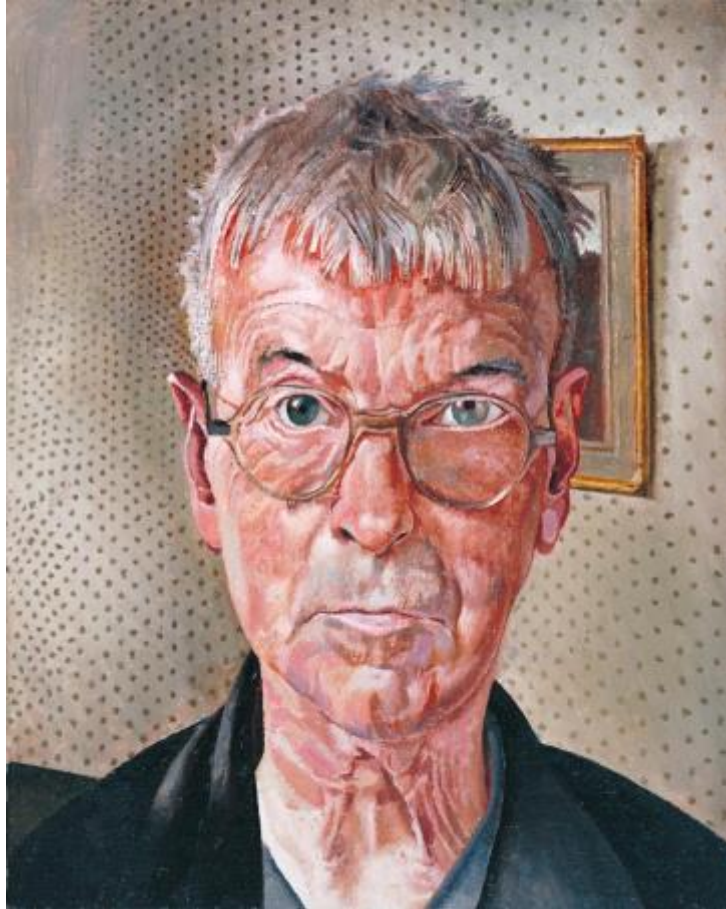
the ones I liked most was a very detailed and realistic painting of "Whitby the Lines" by Atkinson Grimshaw. It had boats sailing on a river, the moon dancing on the water.



Gallery three had lots of sculptures in it, and my favourite was one that had a man, a woman and a baby by Barbara Hepworth.



In gallery 7 I came to a Stanley Spencer exhibition which was a very good exhibition indeed, with lots of different and abstract paintings.



I highly recommend it and if you go you have a lot to look forward to!

Please share your comments

Many thanks

Leon McIvor